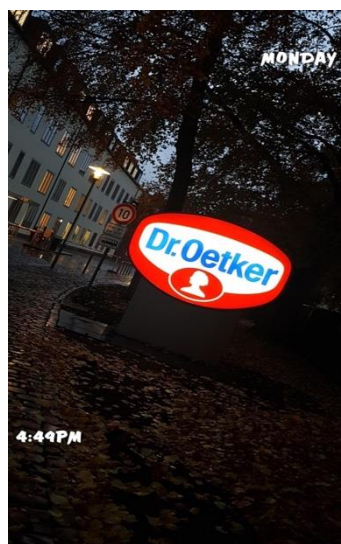


Urooj Rani
Bielefeld, Germany Trip 2018

Myself, along with two other Nursing students had the privilege to be part of an incredible, beneficial and scholastic programme, The TransCoCon project. This is a European project, where students and teachers from European countries (UK, Germany, Finland, Belgium, Portugal, Ireland and Spain) collaborated to cultivate RLO'S (Reusable learning resources) grounded on cultural awareness in Nursing. This one-week event was extremely educational and enjoyable, which permitted me to gain a valuable experience through working with global students and professors from international universities and learning about Nursing in their respected countries and how it fluctuates nonetheless still similar to England.



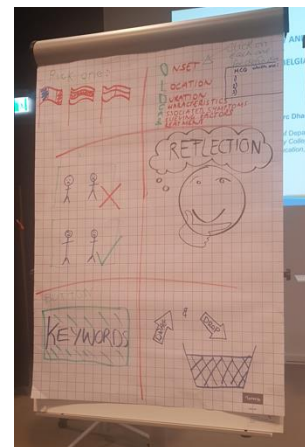
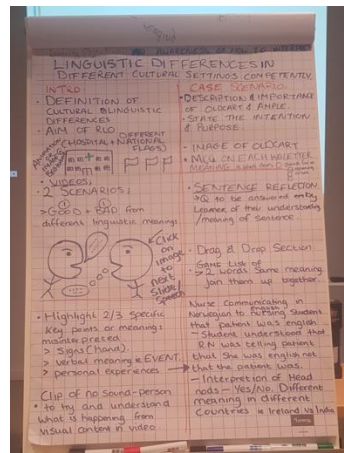
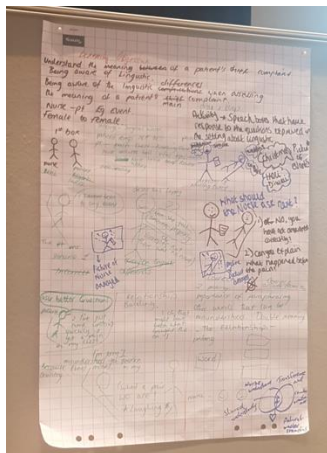
Bielefeld University of Applied Sciences (Fachhochschule Bielefeld), is a beautiful and modern university with up-to-date facilities for students and staff. The welcome we received from Bielefeld University was very sincere. The first day at university was spent with everyone getting to know each other by carrying out different activities and having discussion about nursing and its importance. Moreover, on the first day while all the staff members were busy in meeting, the students had a surprising opportunity to visit Dr Oetker, which is a German multinational company, with its headquarters based in Bielefeld that generates puddings, frozen pizza, cake mixes, food decorations and various of other products. At Dr Oetker we were shown the company's success from when it started back in 1891 till present day, through an exhibition which illustrated company's products, making of the dishes and much more. At the end of the tour, we all received goody bags from Dr Oetker and ate endless amount of pizzas and puddings made in Dr Oetker's kitchen. It was delicious!



In addition, we had the opportunity to visit Evangelical Bethel hospital, which is located on beautiful hilltop. We were welcomed by the manager of critical care department, who showed us around different departments; Stroke Unit, Emergency Department and Intensive Care Unit. Also, we spoke to nurses, doctors and students who were present, telling us about their roles, experiences and their departments. The hospital is modern and had latest facilities, technology and equipment and is similar in many aspects to UK hospitals but still diverges in some elements; such as uniforms and working shifts pattern. Bethel hospital also has contract with the British Armed forces and provides health care to armed forces when required.



During our time in the university, we helped develop RLO's based on cultural awareness in nursing to aid students in becoming competent in dealing with variety of patients, from different background and cultures. We analysed, evaluated and discussed RLO ideas developed by universities to support their ideas. I extremely enjoyed working in groups, mixed with students and teachers from different countries, which permitted me to mature my communication and teamwork skills and increased my awareness and knowledge of nursing in other places.



My favourite part of the event was the evening meal arranged by Bielefeld staff for everyone at Bultamannshof restaurant, giving everyone the chance to socialise and celebrate the positive outcome of the event. In our free time, we visited Sparrenberg Castel, located high above the town on Sparrenberg hill and the shopping centre, The Loom.

